

**NextNet**  
WIRELESS

- Self-contained integrated radio and modem
- True plug-and-play portability
- No service provider installation required
- Always-on connection
- Consistent broadband speeds across entire cell radius
- Adaptive high-order modulation 4/16/64 QAM
- Supports single or multiple computers
- No software to load on subscriber's computer
- Standard Ethernet connection
- Home and small office access

# NEXTNET EXPEDIENCE®

## NLOS PLUG-AND-PLAY PORTABLE CUSTOMER PREMISE EQUIPMENT INTEGRATED RADIO MODEM

### Non Line-of-Sight Broadband Wireless Residential Subscriber Unit (RSU-2510A)

NextNet's Expedience® Residential Subscriber Unit is a high performance, attractively-packaged broadband wireless access modem for indoor applications. It is a true NLOS Plug & Play Ethernet device, requiring no drivers to be added to the subscriber's computer or LAN. The RSU-2510A incorporates automatic adaptive modulation for increased throughput and network capacity.

Users are connected in seconds and enjoy always-on broadband speeds at indoor locations throughout the entire system's coverage area.

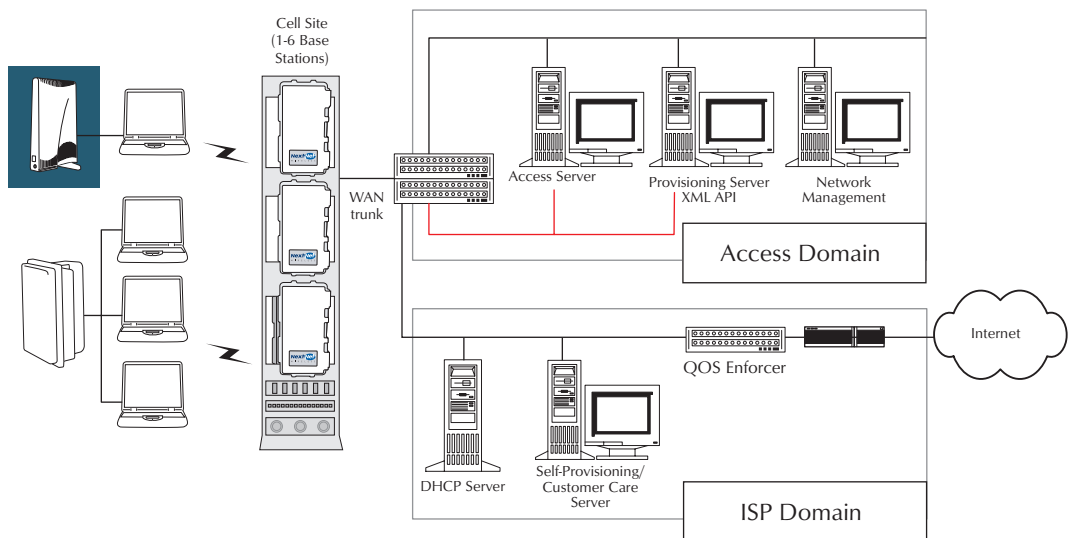
The unit functions as an Ethernet bridge (Layer 2) device, and is ideal for single host or SOHO LAN applications interfacing a standard 10/100base-T LAN or NIC via an RJ-45 connector. It is compatible with all standard Ethernet devices such as 802.11 wireless access points and webcams.

The RSU includes a power supply allowing it to be driven by any 110/220V (50/60 Hz) source.



## RSU-2510A SPECIFICATIONS

Channel bandwidth	6 MHz
Modulation	OFDM - 4/16/64 QAM
Frequency band	2500-2692 MHz MMDS
Mode of operation	Time Division Duplex (TDD)
RF output power	2 Watts
IP addresses	15 static or dynamic
Management	SNMP, WEB server, Telnet, FTP, syslog
LAN interface	IEEE 802.3 10base-T / Ethernet RJ-45 connector
Enclosure	Indoor desktop
Temperature range	0°C to 40°C (operating)
Relative humidity	0 to 95% non-condensing
Dimensions	9.3 in (H) x 6.4 in (W) x 1.2 in (D) 23.5 cm (H) x 16.2 cm (W) x 3 cm (D)
Line voltage	100-240 VAC, 50-60 Hz
Average power consumption	10 Watts
Safety and electromagnetic emissions certifications	UL/ULC FCC part 15 class B FCC part 21 and 74



9555 James Avenue South, Suite 270 Minneapolis, MN 55431 USA  
Ph. 952.929.4008 - Fax: 952.929.4080 - [www.nextnetwireless.com](http://www.nextnetwireless.com)

This specification is subject to change without notice.  
Copyright 2003 NextNet Wireless, Inc. All Rights Reserved.

rsu2510a\_rev1