



MAIN - PRODUCTS - WIRELESS

[About Us](#) [Showcase](#) [Products](#) [Contact Us](#)



airBridge™ Customer Premises Equipment (CPE)

airBridge™ is a Wireless Ethernet client, fully compatible with the 2.4 GHz IEEE 802.11b specifications. The proprietary design of LongRange™ radio, remote management software tool suite and the feature set optimized for wide area wireless networks makes it the best Customer Premise Equipment in the market today.

The airBridge™ is available in three form factors – Stylish Indoor, Rugged NEMA4 compliant to withstand temperature extremes for Outdoor, and a TOTAL product with integrated antenna for a one box convenience. These form factors meet the requirements for all different wide area wireless network installations.

Continuously responding to the enhancement requests from the large customer base, airBridge™ has evolved to be the most versatile and complete CPE (Customer Premises Equipment) for rapid and economical deployment of wireless networks to cover wide areas. airBridge™ is a dream come true for the Wireless ISPs and other network operators. It combines ease of installation with unmatched performance. It is an ideal cost effective solution for customer premise equipment to solve the last mile problem.

LongRange™ radio performance goes the distance

airBridge™ features smartBridges' proprietary LongRange™ radio design to deliver high data throughput over long operating range. The LongRange™ radio pumps out high power signal that can travel the distance. The incredible receive sensitivity of the radio allows it to listen to the smallest incoming signals. These superior radio characteristics result in long-range wireless coverage. With a suitable external antenna, the range extends over 34 kilometers (21 miles) in free open space. Better range of the airBridge™ translates directly into lower wireless infrastructure costs because large area can be covered with fewer access points.

Simple and Fast Installations

airBridge™ has been designed with ease of installation in mind. airBridge™ simplifies

Features

- Ideal Customer Premise Equipment for all indoor and outdoor applications.
- LongRange™ radio with high Transmit power and exceptional Receive sensitivity for high data throughput over long distance.
- Remote monitoring & management eliminates truck roll and save operational cost.
- Can support up to 64 computers on the Ethernet interface.
- Seamless interface with the simpleNMS™ tool suite.
- Powered through Ethernet cable using powerShot™ PoE injector to simplify installation.
- Intuitive GUI interface of simpleMonitor™ to manage the device.
- Driver-less operation with true 'Plug and Play'.
- High Level security with full 128-bit Key WEP encryption
- Auto-fall back data rate for long distance communication and noisy environments
- Firmware is upgradeable to protect your investment.

Links

- [Product Press Release](#)
- [Business Case Studies and Customer Success Stories](#)
- [Application Notes](#)
- [White papers](#)

[Technical Information Center](#)

[Wireless Link Calculator](#)

[Certified Antennas](#)

[Contact Global Tech Support Center](#)

[How to Buy](#)

Product Navigation Table

	<i>Client Devices</i>	<i>Access Points</i>
--	-----------------------	----------------------

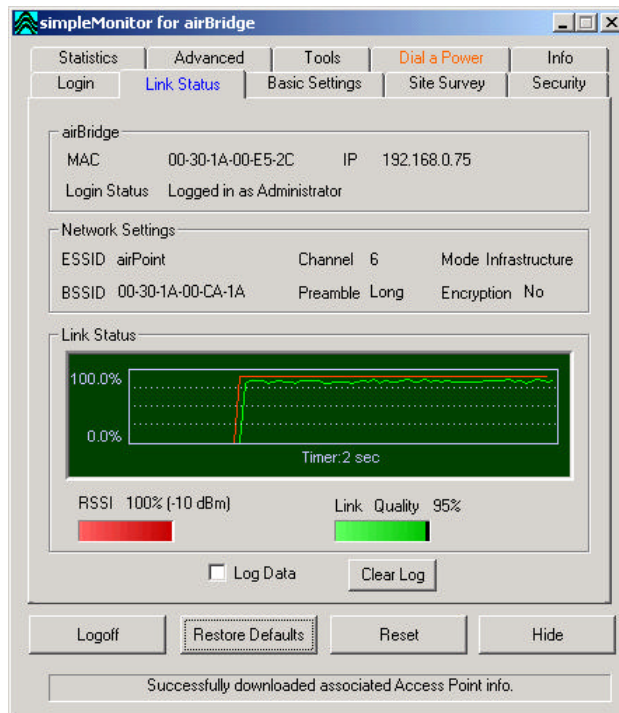
subscriber installation with its Power over Ethernet (PoE) operation. This allows the CPE to be located up to 100 meters (327 feet) away from the power point. The PoE injector powerShot™ is included with every device. A unique weatherproof RJ45 connector for the Outdoor and TOTAL devices allows quick installation of the Ethernet CAT5 cable through the building walls. The driver less operation of the airBridge™ eliminates complicated driver conflicts with various Operating Systems. The smartBridges' unique software tool simpleDeploy™ can pre-configure the airBridge devices. These pre-configured devices enable a true Plug&Play operation. This level of simplification allows for even subscriber self-installation, a holy grail in the Broadband service deployment.

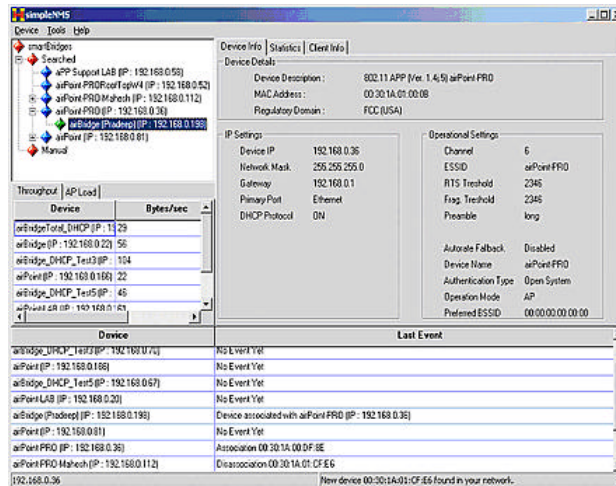
All-in-One Convenience	airBridge TOTAL	airPointPro TOTAL
Rugged Outdoor	airBridge Outdoor	airPointPro Outdoor
Stylish Indoor	airBridge Indoor airNIC airCarte	airPointPro Indoor
Accessories	powerShot smartNIC2	
Management Software	simpleNMS simpleDeploy simpleQual airRoute	

Wide selection of Certified Antennas

The airBridge™ has been FCC Certified with many different antenna types to choose from. This flexibility allows design of high performance links with ease. The airBridge™ TOTAL product integrates a well matched 13dBm antenna (9 dBi for ETSI domain) to provide a complete high performance solution in a single box. The software 'dial-a-power' feature provides flexibility to adjust the gain characteristics and adjust the radiated transmitter output power to conform to local regulatory limits as well as reduce noise interference in large networks.

Remote Monitoring and Configuration Tools





The simpleMonitor™, an advanced SNMP Management tool designed specifically to simplify wireless network management complexities. It helps manage the wireless-centric network device parameters such as, channel selection, network association, data rate, traffic statistics, site survey etc. Its graphical user interface is extremely intuitive for navigating, examining, and managing the airBridge™.

In addition, an advanced network management system simpleNMS™ provides seamless integration for convenient remote management of the airBridge™ devices in far away locations. The remote management capability of the airBridge™ is crucial for cost effective management of the wide area network by eliminating the truck roll outs for subscriber management.

Feature Rich Operational Modes

The airBridge™ has been enhanced to support traffic from up to 64 computers on the Ethernet interface to cost effectively bridge all computers on a LAN to the Wireless network. This allows airBridge™ to set up temporary offices or classrooms. airBridge™ is equipped with a choice of security levels to protect the data transmission. It provides the standard Wired Equivalent Privacy (WEP) data encryption security using a 40 bit Key. Additionally airBridge™ also offers enhanced 64-bit or 128-bit key data encryption for advanced data protection.

The most versatile CPE solution

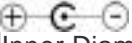
These feature make airBridge™ the most versatile Customer Premise Equipment for a wide range of applications like –

- Residential and Business Broadband
- Apartment Complex
- Hotels and Hotspots
- Convention center and Stadiums

- Warehouses and Shipyards
- Oil Fields
- Beach and Public parks
- Marinas

Learn More[airBridge TOTAL - Convenient all-in-one CPE](#)[airBridge Outdoor – Rugged high performance CPE](#)[airBridge Indoor – Cost Effective CPE](#)**General Specifications**

Wired Interface Port:	Ethernet RJ45 (10 Mbps) IEEE 802.11b, IEEE 802.3 & IEEE 802.1d
Antenna:	Click here for a list of certified antennas
Management and Configuration:	SNMP v2.0
LED Indicators:	Red = Power (Steady ON) Blue = RF Indication (Steady ON when associated and stable link. Blinking while searching). Green = Network Activity (Blinking with traffic)
Power Source:	Power over Ethernet enabled device remotely powered by SB2810 & AC/DC Adapter.
powerShot :	Power over Ethernet injecting device. Input 12V to 18V DC from AC/DC Adapter. Power combined on RJ45 connector (pins 4, 5 = Gnd; 7, 8 =+ve Voltage).
Power Source:	Power over Ethernet enabled device remotely powered by SB2810 & AC/DC Adapter.
AC / DC Adapter:	Input - 90 to 260V AC, 50/60Hz. Output: 12V DC, 1 Amp. The supplied standard 12V DC power adapter can power the devices up to 50 meters (160 feet) of standard CAT5 Cable. Use 15V to 18V power adapter to extend

	the length to the full spec. length of 100 meters (327 feet) of CAT5 cable.
Output Plug of the AC / DC Adapter:	Polarity outer body = +ve, center = -ve.  Inner Diameter = 2.5mm. Outer Diameter = 5.5mm, Length = 10mm or more.
Power Consumption:	9W (Max)
Wireless Data Encryption:	WEP 40 bit, 64 bit and 128 bits keys.
Wireless Media Access Protocol:	CSMA/CA with ACK
Wireless Data Rates:	11Mbps CCK with Auto Fallback to 5.5Mbps CCK, 2Mbps DQPSK, 1Mbps DBPSK
Wireless Medium Operating Channels:	11 FCC, 13 ETSI, 14 Japan
Modulation:	DSSS with CCK / DQPSK / DBPSK
Frequency Band:	2400 to 2483.5Mhz, ISM Band