

## Software Support

The SkyPilot EMS comes with several software packages to facilitate the configuration and management of the SkyPilot network. These include:

- MySQL database
- FTP server to download firmware
- DHCP server to automate IP addressing of all SkyPilot devices and customer devices
- HTTP server to download XML-based configuration files

Supported SkyPilot devices

- SkyGateway
- SkyExtender
- SkyExtender DualBand
- SkyConnector outdoor
- SkyConnector indoor

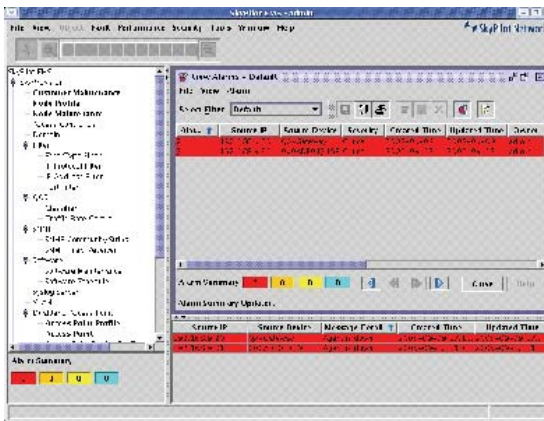
Supported Operating Systems

- RedHat Linux 9.0
- RedHat Enterprise 3
- Fedora Core 2

## SkyProvision and SkyControl

The SkyPilot Element Management System (EMS) provides a simple yet powerful tool for implementing the FCAPS (Fault, Configuration, Accounting, Performance, and Security) management model. The SkyPilot EMS consists of two separate applications: SkyProvision, which provides the configuration and provisioning of SkyPilot devices, and SkyControl, which provides fault management, performance monitoring, and graphical network management. In addition, SkyControl provides network administrators with a method to create their own tolerance and reporting levels to aid with network monitoring and performance tuning.

### Fault Management



SkyPilot's EMS provides a robust fault management system that provides real-time alarm and event reporting. The EMS provides a color-coded system for critical, major, minor, and informational alarms and allows an easy way to handle alarms. The system provides problem detection and facilitates fast resolution.

The Fault Management function also provides event logging and various sorting and filtering capabilities.

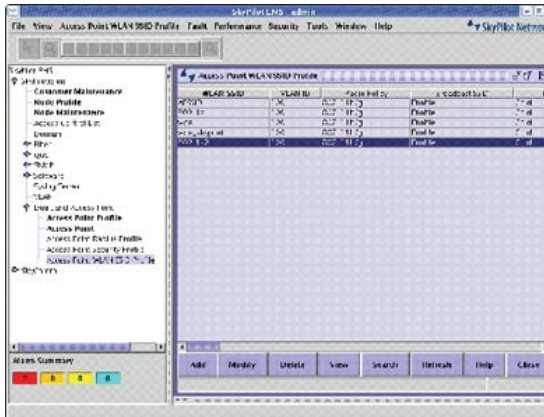
### Configuration Management

SkyProvision provides an efficient, centralized method of managing device configuration throughout the network. SkyProvision provides automatic provisioning by pushing configuration information over-the-air.

In addition, SkyProvision provides the ability to schedule configuration updates as well as scheduled over-the-air software updates.

SkyProvision makes it easy to establish "service profiles" that specify a variety of networking, security, and QoS parameters. This simplifies provisioning of individual subscribers by applying pre-defined profiles.

SkyProvision also provides back-up and restore capabilities of configuration information by storing configuration and subscriber information in a database. The SkyPilot devices



can store multiple firmware images, and SkyProvision can push configurations to devices at scheduled times. In addition, SkyProvision can schedule the time at which the devices switch to a new firmware image.

## Performance Management

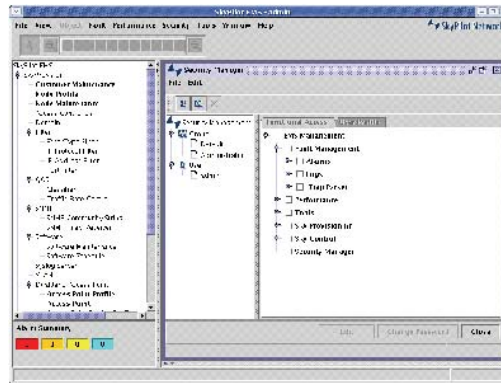
The SkyPilot EMS provides graphical performance monitoring capabilities that provides administrators with the ability to collect data and generate reports for data analysis.



SkyControl provides a real-time, graphical representation of the mesh network showing all nodes with primary links and available standby links. SkyControl enables an operator to efficiently deploy and operate a large scale SkyPilot network and provides network operations with a set of tools that enable real-time network monitoring and management.

## Security Management

The SkyPilot EMS provides full user management by enabling administrators to create users and user groups and assign functional permissions to individual users or entire groups. This provides a great deal of flexibility for allowing functional access while maintaining control over user authorization.



2055 Laurelwood Road  
Santa Clara, California 95054-2747  
For more information about the SkyPilot System:  
Visit [www.skypilot.com](http://www.skypilot.com)  
Call 408.764.8000 or (866) SKYPILOT (toll-free in the U.S.)  
Email [sales@skypilot.com](mailto:sales@skypilot.com)

© 2006 SkyPilot Networks, Inc. All rights reserved. SkyConnector, SkyControl, SkyExtender, SkyGateway, SkyPilot, SkyPilot Networks, SkyProvision, the SkyPilot logo, and other designated trademarks, trade names, logos, and brands are the property of SkyPilot Networks, Inc. or their respective owners. Product specifications are subject to change without notice. This material is provided for informational purposes only; SkyPilot assumes no liability related to its use and expressly disclaims any implied warranties of merchantability or fitness for any particular purpose.